

Your solution



Engineer
Peter Hoffmann - 0428 865 641

Logistics Executive
Peter Bishop - 0439 001 519

Sales Director
Peter Shattock - 0488 740 676

ABN: 34 127 992 527

Old Sturt Highway,
Berri, 5343,
South Australia

Do your miners need
on-site accommodation
and office space?



Australian Transportables
offers an easy solution.

We specialise in building **affordable**, quality living quarters and offices for the mining industry.

We can build and deliver to your specifications or supply our own customised transportables.

Our designs will save you money and keep your workers comfortable.

We have extensive experience in the construction industry and build to Australian industry standards.

Our colourbond, customised living quarters and offices are built in our South Australian factory and delivered on site as required. Standard accommodation features include a self contained ensuite, 1.5hp reverse cycle air conditioner, built-in wardrobe and cupboards, hot water system and a double bed.

Our designs can be altered to meet specific requirements (eg: no inbuilt furniture) but have been fitted out to enhance living standards and your chances of recruiting and retaining quality staff.

Our extensive experience in the construction and freighting industries ensures we have the capacity to fill and deliver orders quickly.

Call us anytime to discuss how Australian Transportables can help you.



www.AustralianTransportables.com.au

Introducing



Engineer
Peter Hoffmann - 0428 865 641

Logistics Executive
Peter Bishop - 0439 001 519

Sales Director
Peter Shattock - 0488 740 676

ABN: 34 127 992 527

Old Sturt Highway,
Berri, 5343,
South Australia

Experience and expertise

3P Investments Pty Ltd Directors - Peter Shattock, Peter Hoffmann and Peter Bishop - formed and registered the business, **Australian Transportables**, to meet the demands of **quality and affordable accommodation for the mining industry**.

Our accommodation units are made to last in the harsh Australian climate.

As both Owners and Directors of Australian Transportables, the three Peters take a hands on approach to their business by developing eco-friendly buildings that will have a limited effect on the environment while still retaining its superior quality.

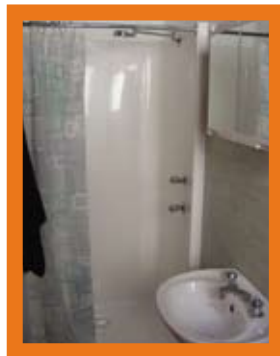
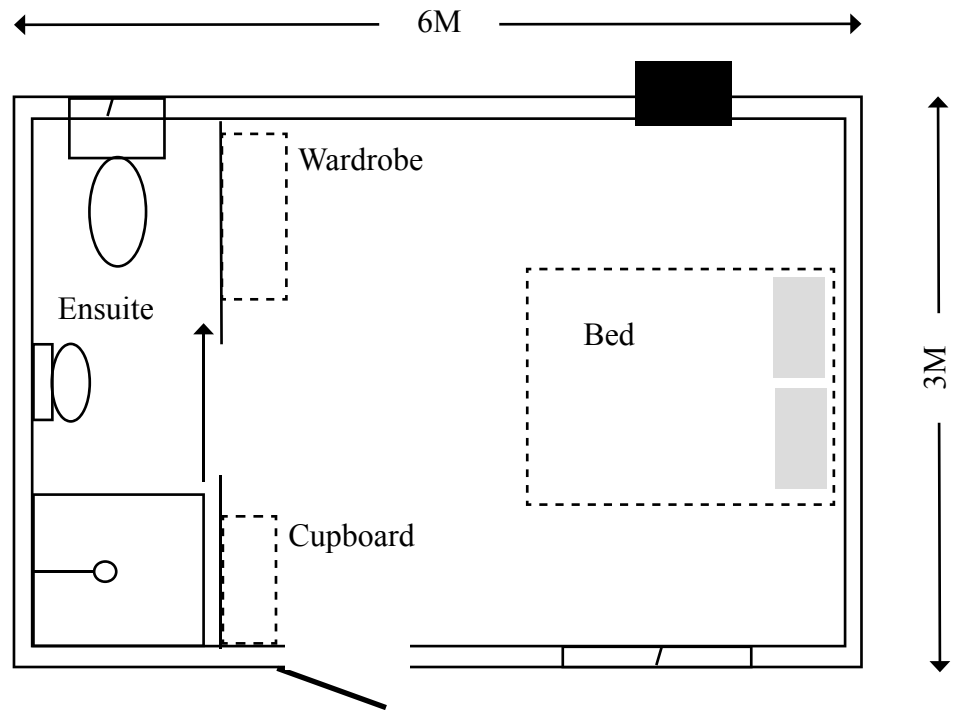
We can design and build to your requirements. Changes can be made at your request to layouts prior to putting any building into the fabrication stage. All our buildings and designs are **fully certified** to meet cyclonic codes and all work is carried out by qualified tradesmen so you can be assured of the quality and safety of your end product

Features include:

- Strong & Secure
- Heavy Duty
- Low Maintenance
- New Building
- Reverse Cycle Air-conditioning
- Floor Coverings
- Fully Insulated
- Fully wired including switchboard and light fittings
- Bathrooms where shown
- Short Lead Times
- Total Package



Living quarters floorplan



Ensuite.



Spacious living quarters.



Ensuite entrance



Built-in storage optional.

Our product



Engineer
Peter Hoffmann - 0428 865 641

Logistics Executive
Peter Bishop - 0439 001 519

Sales Director
Peter Shattock - 0488 740 676

ABN: 34 127 992 527

Old Sturt Highway,
Berri, 5343,
South Australia



Engineer
Peter Hoffmann – 0428 865 641

Logistics Executive
Peter Bishop – 0439 001 519

Sales Director
Peter Shattock – 0488 740 676

ABN: 34 127 992 527

Old Sturt Highway,
Berri, 5343,
South Australia

Specific Building Schedule

6 metre x 3 metre living quarter inclusive of:



General

- RCD protected switchboard at point of entry

5x3M living area

- 1 x 820 x 2040 emergency fire exit exterior door
- 1 x 1200 x 900 glass sliding window
- 2 x internal fluorescent lights
- 1.5HP in wall airconditioner
- vinyl flooring
- TV coaxial input
- Fire alarm detection device

1x3M bathroom

- 1 x fluorescent light
- 900x900 fibreglass shower enclosure
- standard pan and cistern
- mirror
- pedestal hand basin and tap
- 50litre hot water service
- commercial vinyl floor and 100mm wall covering
- 750x500 frosted sliding window

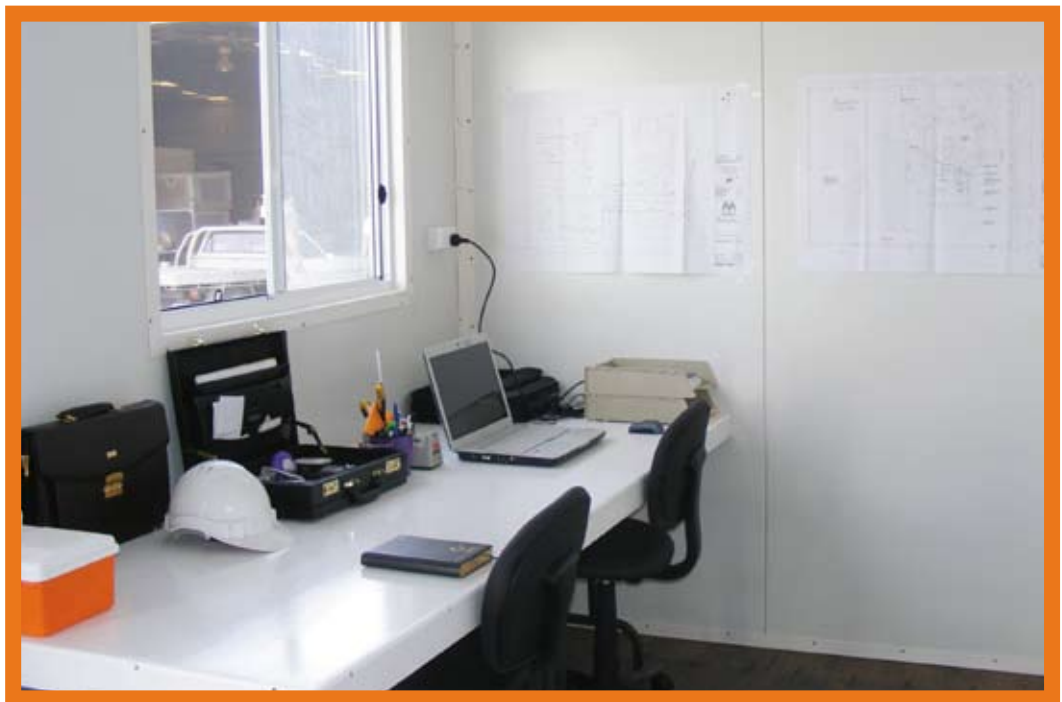
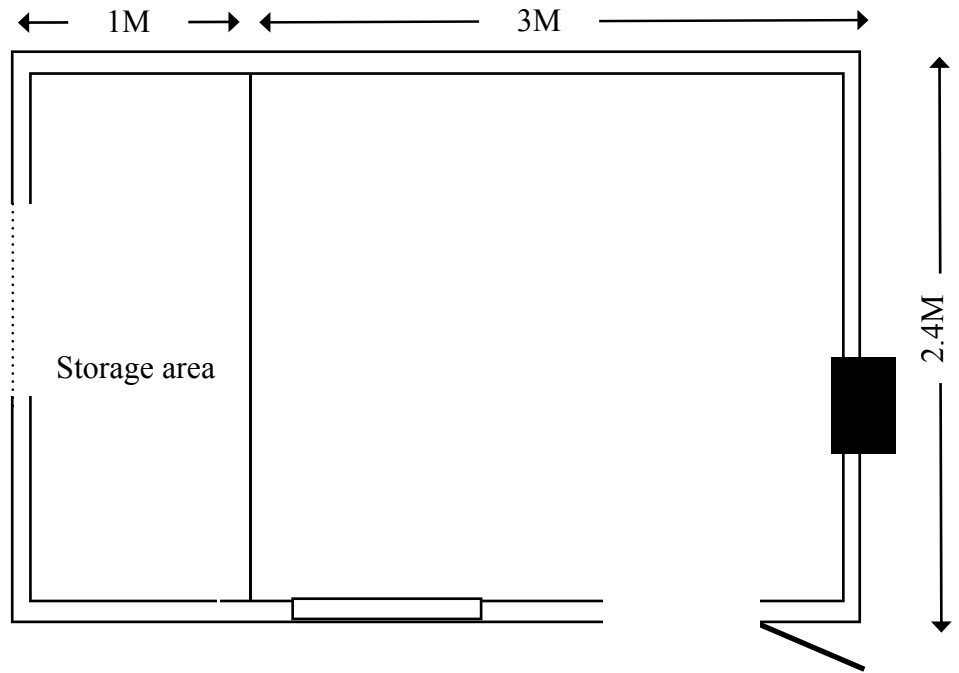
General Specifications

- All buildings designed and certified in accordance with REGION A Category 2 AS1170.2:2002
- Chassis and roof frame – Cat 2
- Floor coverings defined in specific building
- Flooring 19mm structural p/board flooring
- Ceiling linings – mini flute -.42 BMT zinc
- External walls – 0.42BMT corrugated iron – colourbond
- Internal Walls – Compressed wood wafer board
- R2.2 polyester insulation to all walls
- Astrofoil insulation to roof
- Roofing – 50mm Bondor Panel
- Ceilings – 2400 height
- Built to BCA 2007 requirements
- Electrical wiring to Australian Standards - certified
- Plumbing to Australian Standards

General Exclusions

- Furniture unless mentioned in specific building schedule
- Connection of services
- Footings and fixings unless provided in quote
- Footing plans and schedule can be provided
- Certified building plans can be provided

Office floorplan



Our product



Engineer
Peter Hoffmann - 0428 865 641

Logistics Executive
Peter Bishop - 0439 001 519

Sales Director
Peter Shattock - 0488 740 676

ABN: 34 127 992 527

Old Sturt Highway,
Berri, 5343,
South Australia

About Us



Engineer
Peter Hoffmann - 0428 865 641

Logistics Executive
Peter Bishop - 0439 001 519

Sales Director
Peter Shattock - 0488 740 676

ABN: 34 127 992 527

Old Sturt Highway,
Berri, 5343,
South Australia

About Us

Australian Transportables has three working directors.

Peter Hoffmann owns Hoffs's Steel Erections Pty Ltd in the Riverland of South Australia. He and his father have over 35 years experience in the Engineering and Steel construction trade and have been responsible building a wide range of commercial, industrial and domestic structures.

Peter Bishop owns Bishop Transport and his experienced team of drivers are responsible for delivering Australian Transportables' products across Australia.

Peter Shattock has 35 years experience with construction materials in the mining industry.

Feel free to contact any of us for further information.

Testimonial

I have no hesitation in recommending the quality of work undertaken by Peter and his team during the construction of our Visitor Centre. Their attention to detail and ability to work to tight deadlines and within budget was greatly appreciated.

Anne Ruston, owner Ruston's Rose Garden, Renmark
(the biggest rose garden in the Southern Hemisphere)



Director Peter Hoffmann and Australian Transportable's demountable independent living quarters built specifically for the mining industry.